

# Brush Strokes

Newsletter of the Corvallis Art Guild

April 2011

**Next Meeting, 7pm First Presbyterian Church, 8<sup>th</sup> Street & Monroe April 4th  
What we are looking forward to;**

## **TONI ACOCK**

**Toni** will be the speaker at the Guild meeting on April 4, 2011. Toni paints with kiln-fired mineral on porcelain, as well as painting with egg tempura and oils.

At our meeting, she will be discussing her work and an ongoing project in which she is involved, known as the "Tree Project". She will also discuss how she discovered the possibilities for an adult artist entering art competitions. Although she won her first art competition in first grade, she only recently discovered adult artist competitions and will share her tips for finding and participating in such competitions.

Toni has been creating art for most of her life, and has conducted studio classes in a variety of forums for over 30 years. She sees herself as a teacher and mentor for other artists. Toni has been a staff writer and editor for several art publications.

A sample of Toni's work can be seen below, and other work can be viewed at [hope41.home.comcast.net/~hope41/toni.htm](http://hope41.home.comcast.net/~hope41/toni.htm).



**President's Message:**

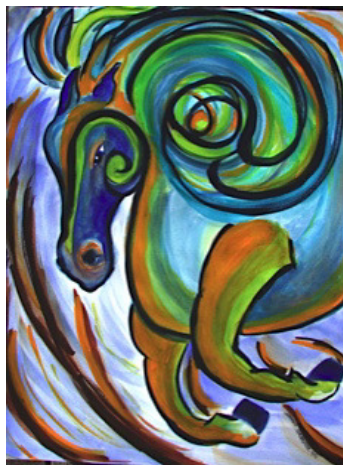
With all the grim news in the world, I thought I'd share an article of good news that appeared in The Art Newspaper, an on-line news site (published March 11, 2011).

**MACHU PICCHU COLLECTION IS PERU-BOUND.**

Ending a long-standing feud, Yale University says it will return 5000 artifacts to Peru as a gesture of goodwill. At issue were 5000 artifacts carted off from the ruins at Machu Picchu by American explorer Hiram Bingham in 1911-12. The artifacts have been in the possession of Yale University's Peabody Museum. In the lawsuit, Yale officials claimed they had a right to keep the objects while Peru maintained that Bingham failed to abide by an agreement to return the collection.

All of us have visited museums, historical centers, and archaeological sites - such as the pyramids of Egypt and beautifully preserved site of Machu Picchu - that have been pillaged by outside marauders, thieves, and explorers. Thankfully, these artifacts from the Inca civilization are being returned to the people of Peru.

Rick Lorraine



Whirlwind, a watercolor by Sandy Strohmeyer

Featured Artist

## HERBERT BERMAN

When I visited Herbert in his Corvallis home, I immediately saw that the article in the *Gazette-Times* last May was correct in saying that Herbert painted nearly every day. Yes, this is a man who loves to paint. There are canvases everywhere. Some are portraits and landscapes but many are rich, deep still-lives. He has his favorites, of course. He will often paint a second and third "original duplicate" so that when he sells a favorite, he still has an original.

Born and raised in New York City, he studied at the National Academy of Art and the Art Students' League. David Leffel, the well-known portrait artist, had the greatest influence on Herbert. Berman fondly refers to his former teacher as an "American Rembrandt".

When I asked him, "What is something people don't know about you?", his lovely wife Regina said "He's a lion. Everything you think about a lion, that's him." she says with conviction. Herbert grinned and said, "I'm an innovator too. I like to build things - like a variety of easel designs for artists. I also designed a brush holder so that I can paint when my arthritis acts up".

Herbert wants to pass on what he knows to others - and so he gives lessons in his studio at home. How fortunate for those students!



"Jasmine" by Herbert Berman

## **50<sup>th</sup> Annual Clothesline Sale of Art**

### **August 6, 2011**

Even though the 2011 Clothesline Sale is still a few months away, preparations are already being made.

This will be the 50<sup>th</sup> anniversary of the sale and we are arranging to have local music groups perform at the event to commemorate this milestone.

Much of the website ([clotheslinesale.org](http://clotheslinesale.org)) has already been updated and we are signing up volunteers to help with setup/take down, poster distribution as well as cashiering. The sign up book for these volunteer jobs will be circulated at all upcoming CAG meetings. You can also volunteer by contacting me directly at [mike@creativdialog.com](mailto:mike@creativdialog.com).

In the past couple of years we have had a few empty slots, so we encourage everyone to participate. You only need to be a juried member and have shown work in at least one of our Hanging Around Town venues during the 12 month period prior to the sale.

Let's make this milestone sale the best ever.

Mike Bergen



Tide Pool, Watercolor by Judy Findley

## Brushstrokes Announcements

- **Art In the Valley** which is a cooperative gallery, has openings for new members. If interested, please call Ellen Borowski at 541-754-2100.
- **Arts Center Board Member Needed** Would you like to be a member of the Arts Center Board? This puts you in the hub of art activity in Corvallis. We are looking for a CAG member to represent the various guilds as a member of the Arts Center Board. Meetings are monthly. Please let me know if you might be interested at [rblorraine@gmail.com](mailto:rblorraine@gmail.com)
- **Congratulations to Judy Findley** who sold a painting at the Howland Open Show last month. She also had a painting (Tide Pool) accepted in the Watercolor Society of Oregon Spring Show which will be held in Eugene April 1-3.
- A work of art by **Kate McGee** was published in the **April 2011 issue of Pastel Journal**, as an Honorable Mention in the Abstract and Non-Objective Category. Unfortunately, it is mislabeled. Kate's piece is in the lower left on page 76, not the one to the right. There is a lot of beautiful work on display, congratulations Kate!
- **Congratulations to April Fisher** who sold two artworks at Timberhill Athletic Club.
- **CAG Logo Remains the Painter's Brush** The Board agreed with Earl Boissonou that the present painter's brush is an appropriate logo for the Guild. There is no need to develop another logo.
- Looking for someone who does book illustration, please email [desrayh@yahoo.com](mailto:desrayh@yahoo.com)
- **IMAGINE OREGON 200 YEARS AGO! Oregon's Botanical Landscape**, an exhibition of artwork by **M. Frances Stilwell**, May 6-June 4, 2011 in the Moreland Gallery of the Benton County Historical Museum in Philomath, Oregon, offers an opportunity to experience the diversity of plant life that existed prior to European settlement.  
A poster was designed especially for this Exhibition shows Oregon's eco-regions surrounded by artwork representing the regions.  
In honor of the statewide Native Plant Appreciation Week May 1-7, the opening reception of the exhibition is **May 6 from 5-7 pm**.
- **CAG Workshop Planning Continues** ...Based on the participation feedback at our last meeting, the Board is moving forward with plans to offer a two-day weekend workshop in the fall with an Oregon artist. More information in coming Brushstrokes.

- **Bring "Finger Food"** The CAG will be hosting a reception at the Arts Center for a show entitled TIME, an exhibit of artwork by inmates from the Oregon Correctional System. As hosts, we need "finger-food" and volunteers to set up the food table, welcome guests, and clean-up at the end. 5:00 to 7:15 on April 7th. Email Joyce Canan [joycecanan@peak.org](mailto:joycecanan@peak.org)
- **CAG Jury Selection Scheduled** Art Guild members who would like to exhibit their art work in various CAG sites around town need to have their work approved by CAG jurors. If you would like to be juried, bring 3 pieces to the April 4th meeting by 7pm. Contact Richard Helmick, Jury Chair, 541-738-9679, [helmickr@proaxis.com](mailto:helmickr@proaxis.com). The decision of the jurors is final.



Artwork by inmates from the Oregon Correctional System

## OTHER EVENTS

- **March 10-26** Cheri at U-Craft-It is having 30% sale on ready made frames and all in stock art; and 10% off custom mats and custom glass .
- **Creating an Effective One Page Business Plan** The Brownsville Art Association in cooperation with Oregon Arts Alliance of Eugene is hosting "Creating an Effective One Page Business Plan" as one in a series of classes called, "The Art of Doing Business" designed for artists.

Presented on Saturday, April 9, 11 am to 12:30 pm in the Arts Center in Brownsville City Hall, 225 Main St., Brownsville. Robert Tomlinson, Director of Oregon Arts Alliance, will be the instructor. The cost is \$10.

Creating a simple, workable business plan, establish your priorities, focus on your goals and setup a one year calendar for achieving them. Build a solid financial foundation that will enable you to stay in your studio and work!

To register call Kelly Durian of Oregon Arts Alliance at 541-687-8353 or e-mail, [Kelly@oregonartsalliance.org](mailto:Kelly@oregonartsalliance.org). If special accommodations are needed, please notify in advance, Alice Tetamore, BAA, at 541-466-5782 or e-mail, [aliceart@centurytel.net](mailto:aliceart@centurytel.net). Next in the series will be "Setting Up An ETSY Account On-Line" on May 14.

- Workshop at the Arts Center on "Presenting Your Portfolio/ Portfolio Review"  
Join a small group of your peers and share your work in a safe and enthusiastic environment. This workshop is a perfect opportunity to think out loud/reflect in a supportive place with what's going on with you and your work in the studio lending your "fresh" eyes to someone else's pieces. You can sign up on the web:  
<http://theartscenter.net/education/adult-classes/>  
They are held every 3rd Wednesday: 3/16, 4/20, 5/18.



Laurel Marie Sobol's "Mount Kilimanjaro Land of Living Giants"

- **"Presenting Your Portfolio/ Portfolio Review"** Join a small group of your peers and share your work in a safe and enthusiastic environment. This workshop is a perfect opportunity to think out loud/reflect in a supportive place with what's going on with you and your work in the studio lending your "fresh" eyes to someone else's pieces. This class is intended to stimulate and challenge you to do your best work while also focusing on how to make a solid presentation of your work in the future to specific arts professionals. Please bring 3 to 5 pieces. If your work is too large, bring quality photos
- **6th Annual Community Art Exhibit, July 5, 2011 - July 28, 2011, Giustina Gallery** is hosting a free (Non Jury) community art exhibit open to all people who reside or work in Linn and Benton County. All ages and skill levels are encouraged to participate. Bring Artwork (only 1 piece of art per person) and Entry Form to Giustina Gallery for submission. Entry form available on-line at the Giustina Gallery website.  

Submissions accepted:	Last day for Submission:	Artist Reception:
June 14-29, 2011.	June 29, 2011 4:00PM	July 8, 2011, 6-8:30pm

- **Art Workshop/Retreat** You are invited to Darla Bostick's multi-media art workshop/retreat at Ghost Ranch in Abiquiu, NM , 31 August- 6 Sept -- includes digital photography, watercolors/acrylics, pencil, incorporating text & more. Opportunity for plein air painting and comfort of a group activity room (floor to ceiling vista views). For 7 days/6 nights you can relax, enjoy, create. Lodging/meals included. The Georgia O'Keeffe Landscape Tour takes you where she painted from the magnificent area scenery. Visit the O'Keeffe studio/home on tour. Space limited/registration begun. Bring materials you love to work with (or try something new) and join us!  
Darla Bostick, 940.320.5660 Email: darlabostickart@yahoo.com www.darlabostick.com

**CAG Meetings** are held;

- first Monday of each month at 7.30pm,
  - social half hour starting at 7pm.
- First Presbyterian Church, Dennis Hall (Brand new building!)  
8<sup>th</sup> Street and Monroe, across from the Library and Central Park.

**EXECUTIVE BOARD**

<i>President:</i> Rick Lorraine	rblorraine@gmail.com	(541) 207-3067
<i>Vice-President:</i> Carol Selberg	cj.selberg@gmail.com	(541) 752-5283
<i>Secretary:</i> Joyce Canan	joycecanan@peak.org	(541) 929-6470
<i>Treasurer:</i> Judy Dedek	JZDedek@yahoo.com	(541) 745-5519
<i>Past-President:</i> Mike Bergen	mike@creativdialog.com	(541) 745-3941

**COMMITTEE CHAIRS**

<i>Clothesline Sale:</i> Mike Bergen	mike@creativdialog.com	(541) 745-3941
<i>Arts Center Exhibit Committee Rep:</i> Ross Parkerson		(541) 754-1870
<i>Exhibit Chairs:</i> Earl and Cherrill Boissonou	boice2@msn.com	(541) 745-7149
<i>Membership:</i> Lynn Thompson	Artforthesoul1@yahoo.com	(541) 745-2027
<i>Newsletter editor:</i> Desray Lithgow	desrayh@yahoo.com	(541) 740 5775
<i>Program Chair:</i> Carol Selberg	cj.selberg@gmail.com	(541) 752-5283
<i>Web Master:</i> Pam Van Londen	Art@pamvanlonden.com	(541) 760-1449
<i>Web Site Chair:</i> Mike Bergen	mike@creativdialog.com	(541) 745-3941
<i>Arts Center Guild Rep:</i> Carolyn Madsen	cmadsen@proaxis.com	(541) 754-1528
<i>New Member Chair:</i> Honor Hoover	hellohonor@comcast.net	(541) 758-6437
<i>Guild Jury Chair:</i> Richard Helmick	Helmickr@proaxis.com	(541) 738-9679

April 2011

Brush Strokes

Corvallis Art Guild

<b>CAG Hanging Around Town</b>	<b>No</b>	<b>April</b>	<b>May</b>
Benton Hospice 2350 NW Professional Dr	11	Anna Tewes	
Borders Books use non marking tacking substance 777 NW 9 <sup>th</sup> St Kristi Hagar	7	Connie Ash	Sandy Lizut
Central Willamette Credit Union, 555 NW Circle Blvd 2 month display	10	Earl Boissonou	
Copytronix/Henderson's 215 NW Jackson Ave	6 each		
Corvallis-Benton Chamber Coalition, 420 NW 2 <sup>nd</sup> St	12	Phyllis Johnson	Lorraine Austin
Corvallis Caring Place 2 month display 760 NW 23 <sup>rd</sup> St	12 each	Ruth Leeper	
Darrell's Restaurant Use fishing line to hang 2200 NW 9 <sup>th</sup> St	10 to 12	Desray Lithgow	
Fitness over Fifty Health Club 6735 Country Club Drive, Suite 103	7	Sabine Miner	Linda Edwards
Grace Centre Coordinate hanging/take down 908 Spruce with Rene Knight 541 754 8417	10		Sandy Strohmeier
Montessori School 2730 NW Greely	8 to 10	Emily Thomas	Claudia Waintraub
Samaritan Regional Cancer Center 501 NW Elks	10	Bob Stebbins	Lois Bottomley
Samaritan Internal Medicine 2months 3515 NW Samaritan Drive #101 Call before hanging - contact Jovanna	8 to 10	Jane Kelsey	
Samaritan Village 285 NW 35th	10		Sabine Miner